



Terry Fox PS Boundary / Holding Change School Council Meeting

January 19, 2011

(revised)

Introductions

Martin Van Beek

Trustee

Allan Hoyle

Superintendent of Schools

Melanie Duckett-Wilson

Principal

Dawn Adams

Manager, Accommodation

Planning

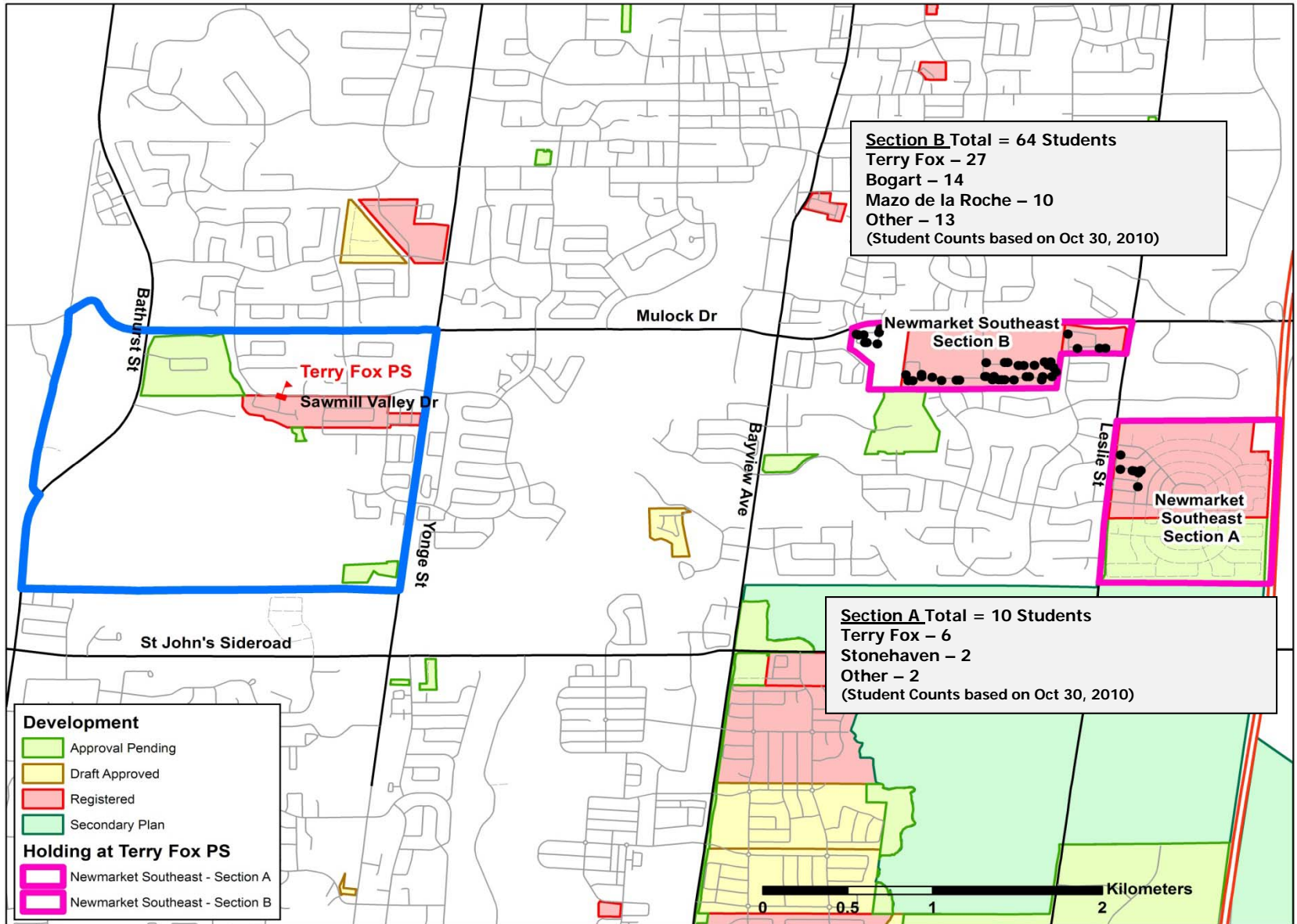
Kathryn Shaw-Edmond

Planner

Agenda

1. Current Boundary and Holding at Terry Fox PS
2. Development remaining in Newmarket Southeast Section A & B
3. Proposed Boundary change
4. Proposed Holding change
5. Proposal and Enrolment Projections
6. Questions?

Terry Fox PS and Newmarket Southeast ES



Terry Fox PS Historical Enrolment

	JK	SK	1	2	3	4	5	6	7	8	NOM
2006	43	36	17	26	24	21	27	30	19	26	269
2007	35	44	38	19	29	25	30	32	37	22	311
2008	46	33	41	38	22	34	26	34	37	40	351
2009	58	48	34	41	43	25	39	27	38	41	394

Terry Fox PS

Current and Projected Enrolment

Regular Program Enrolment as of
Oct 30, 2010

Capacity = 527

	JK	SK	1	2	3	4	5	6	7	8	NOM	Utiliz
2010	51	59	42	36	49	49	27	45	33	46	437	83%
2011	59	52	57	43	37	49	50	28	46	34	458	87%
2012	62	62	52	60	46	39	52	53	31	49	506	96%
2013	64	64	61	54	62	47	41	54	55	33	536	102%
2014	68	68	65	65	58	65	51	45	58	59	602	114%
2015	76	76	72	72	72	64	72	58	52	65	679	129%
2016	82	82	78	78	78	77	70	78	64	59	749	142%

Unnamed Newmarket Southeast Section A and Section B Enrolment

Students currently attending Terry Fox PS

Dataset: Oct 30, 2010

Section A

JK	SK	1	2	3	4	5	6	7	8	NOM
1		1		1	1		1	1		6

Section B

JK	SK	1	2	3	4	5	6	7	8	NOM
3	7	2		2	5	2	2	1	3	27

Unnamed Newmarket Southeast Section A & B Development

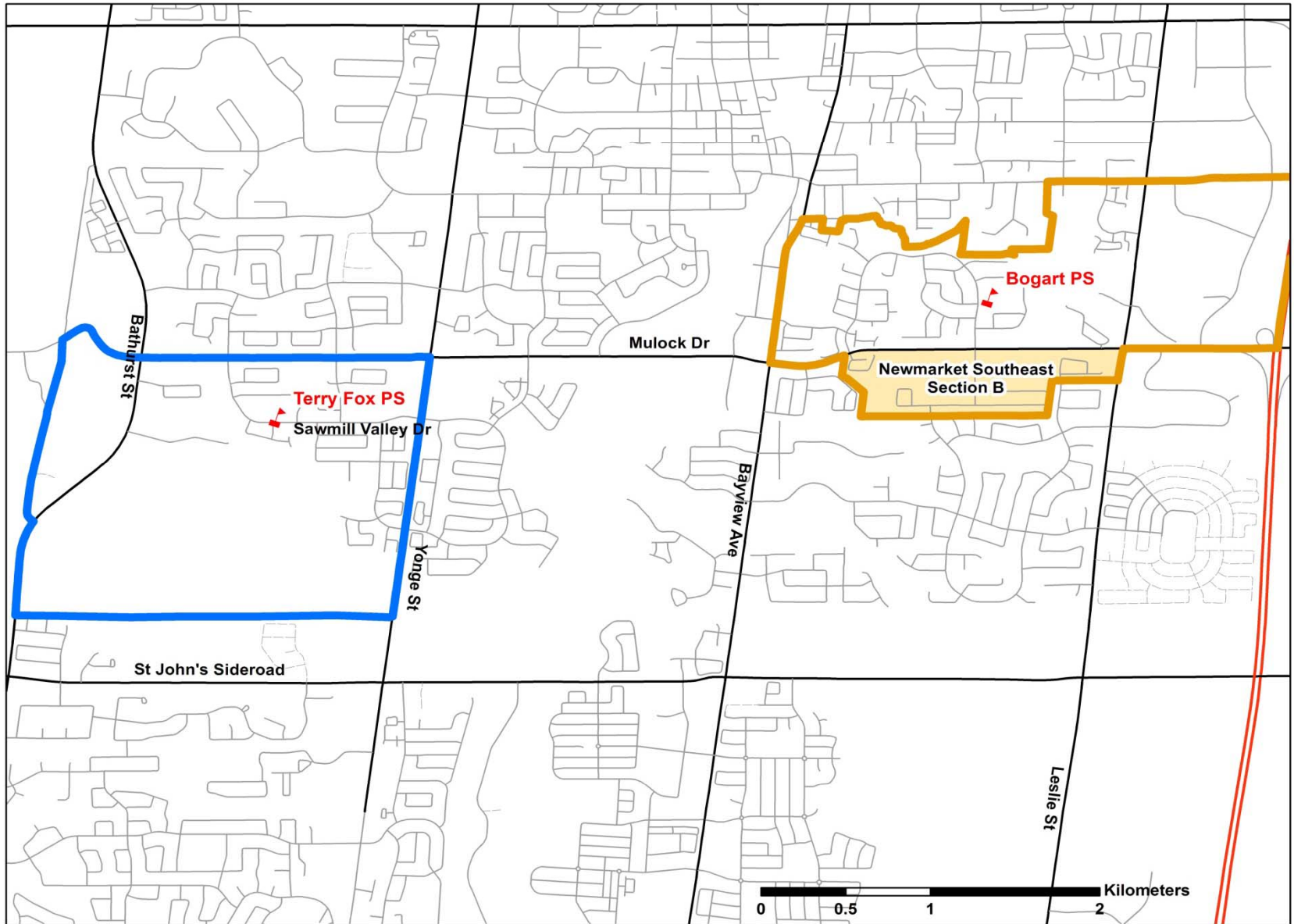
Newmarket Southeast Section A

- Located on the east side of Leslie St, south of Mulock Dr, this boundary is composed of two development applications
- Total units approx 1,200 on build out
- Units within the northern portion (Copper Hills) began construction in 2007 (with approx 18% now completed)
- Units within the southern application have anticipated closings in 2015

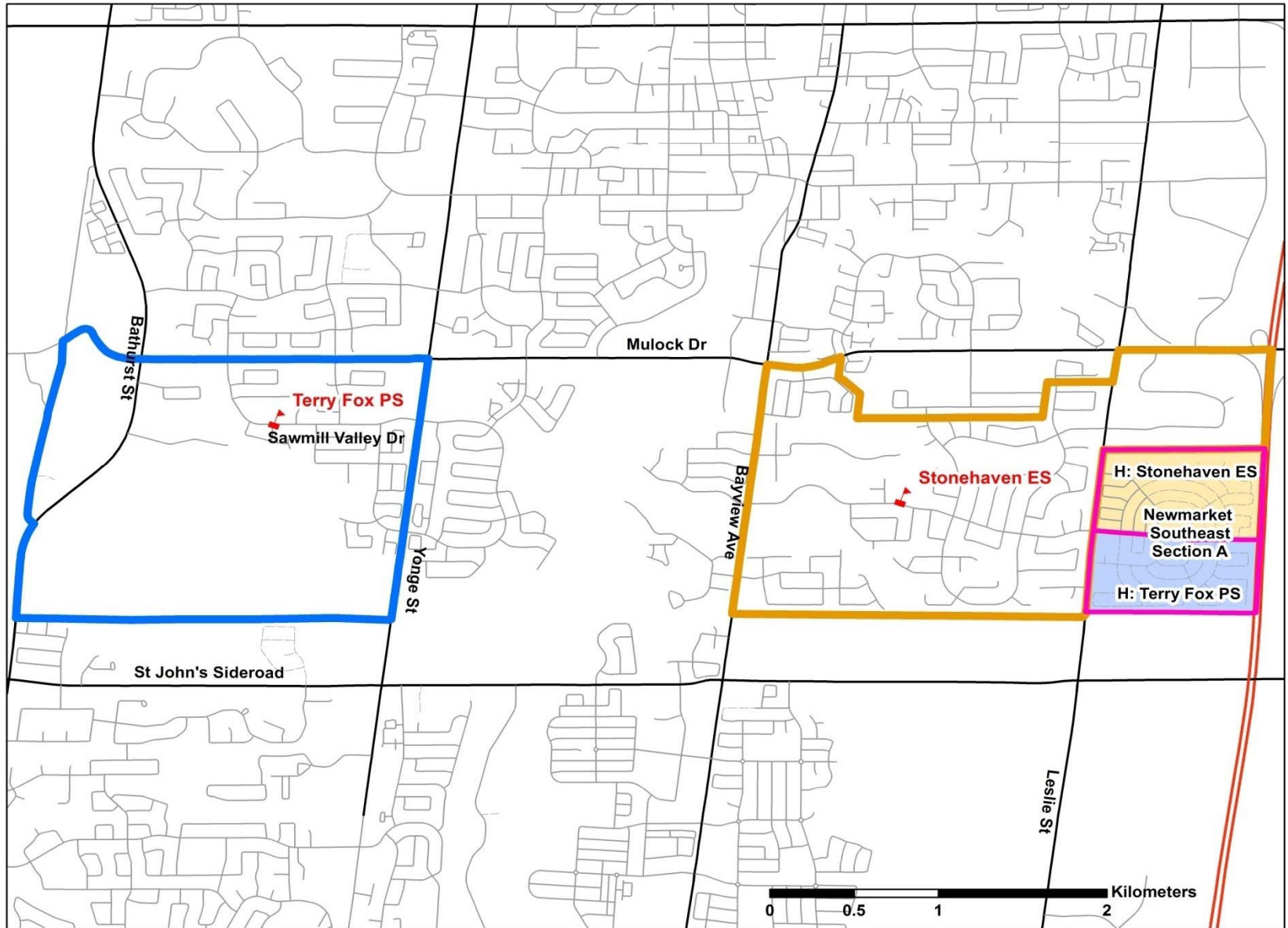
Newmarket Southeast Section B

- Located on the south side of Mulock Drive, there are few remaining units to be built - anticipated closings no later than the end of 2011
- Total units approx 300 on build out
- Units began construction in 2006

Proposed Boundary Change



Proposed Holding Change



Revised Terry Fox PS Projection

Regular Program Enrolment as of
Oct 30, 2010

Capacity = 527

	JK	SK	1	2	3	4	5	6	7	8	NOM	Utiliz
2010	51	59	42	36	49	49	27	45	33	46	437	83%
2011	53	47	49	39	36	45	43	26	42	32	415	79%
2012	54	54	45	50	40	36	46	45	28	44	442	84%
2013	54	54	51	46	51	40	37	47	45	28	453	86%
2014	55	55	52	53	47	51	41	38	48	46	485	92%
2015	59	59	56	56	56	49	54	44	41	51	525	100%
2016	62	62	59	59	59	58	52	58	48	46	564	107%

Bogart PS Projection

Regular Program Enrolment as of
Oct 30, 2010

Capacity = 539

	JK	SK	1	2	3	4	5	6	7	8	NOM	Utiliz
2010	38	38	48	39	48	42	44	56	65	79	497	92%
2011	45	46	42	51	39	47	47	45	58	66	486	90%
2012	45	49	42	43	52	37	47	47	45	58	464	86%
2013	45	49	44	42	43	49	37	47	47	45	448	83%
2014	45	49	45	45	43	41	49	38	47	47	451	84%
2015	46	50	45	46	45	41	42	50	39	48	450	83%
2016	46	50	45	46	46	43	41	42	50	38	445	83%

Stonehaven ES Projection

Regular Program Enrolment as of
Oct 30, 2010

Capacity = 585

	JK	SK	1	2	3	4	5	6	7	8	NOM	Utiliz
2010	48	41	37	41	45	46	48	61	63	72	502	86%
2011	52	51	35	40	41	44	50	50	63	64	489	84%
2012	54	54	45	38	41	40	47	51	51	64	485	83%
2013	55	56	48	47	39	40	43	48	53	53	482	82%
2014	58	59	51	52	49	40	44	46	51	54	504	86%
2015	62	62	55	56	55	51	44	47	49	55	536	92%
2016	64	65	57	59	58	56	54	47	50	52	561	96%

Proposed Boundary Change

- Staff are recommending a Boundary Change whereby, Unnamed Newmarket Southeast Section B be redirected to Bogart PS as of September 2011
- Current grade 7 students attending Terry Fox PS will be given the opportunity to remain at Terry Fox PS for grade 8 with transportation
- Students transferring to Bogart PS will also be provided transportation

Proposed Holding Change

- Staff are recommending a Holding Change whereby a portion of Unnamed Newmarket Southeast Section A (Copper Hills development) be redirected to Stonehaven ES as of September 2011
- Development south of Veterans Way to remain holding at Terry Fox PS

Boundary Process

January 11, 2011	Bogart PS School Council
January 19, 2011	Terry Fox PS School Council
February 9, 2011	Bogart PS Public Meeting
February, 2011	Take recommended boundary change to Programming Planning Committee
March, 2011	Take recommended boundary change to Board Standing and Board for final approval
September, 2011	Implementation