



Boundary Review Meeting

Alexander Muir PS, Poplar Bank PS

November 27, 2012

Introductions

Steven Reid

Superintendent of Schools

Chris Sarellas

Superintendent of Schools

Richard Erdmann

Principal, Alexander Muir PS

Kim Walke

Principal, Poplar Bank PS

Dawn Adams

Manager, Accommodation
Planning

Sonja Meehan

Senior Planner

John Steh

New Schools Coordinator

Agenda

- FI Accommodation in Newmarket
- Transition
- Proposed School Boundaries
- Projected Enrolment
- Timelines

FI Accommodation in Newmarket

- FI is offered by Poplar Bank PS (dual track) and Mazo de la Roche PS (single track)
- These 2 schools serve Newmarket, Holland Landing, Sharon, Mount Albert
- Currently Poplar Bank PS is above capacity
- Long term projections indicate Mazo de la Roche PS will operate at capacity

Future Newmarket FI Program

- Two single track FI schools beginning September 2013
 - Poplar Bank PS
 - Mazo de la Roche PS
- Move Poplar Bank PS regular track program to Phoebe Gilman PS
 - Community input for transition to Phoebe Gilman PS

Options for Transition

- **Option 1**

- All English language students move to Phoebe Gilman PS for September 2013

- **Option 2**

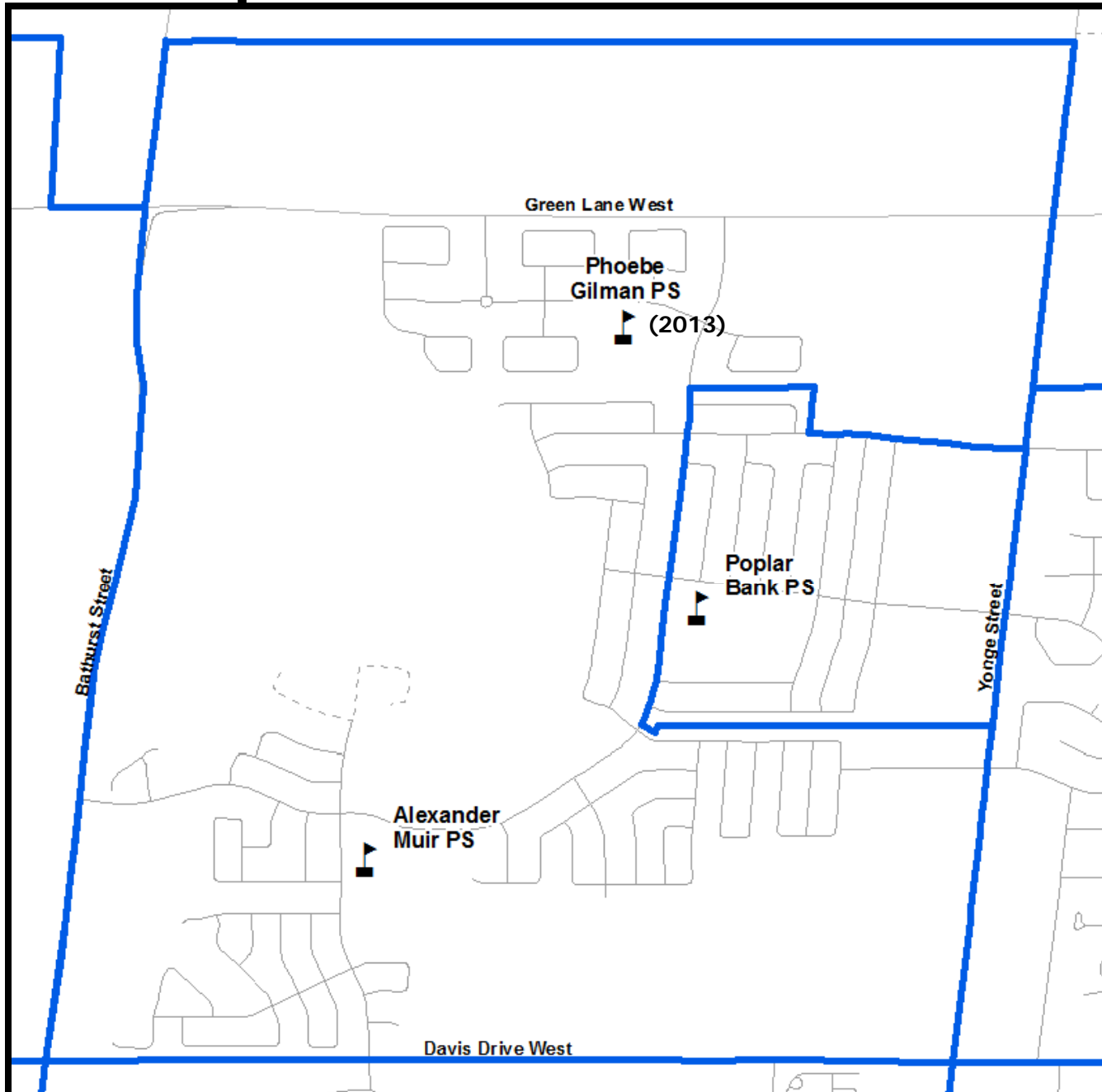
- Current English language students in JK and SK will move to Phoebe Gilman PS beginning in September 2013
- Current English language students in Grades 1 to 7 will stay at Poplar Bank PS until they graduate, assuming that a reasonable number of students remain to ensure that program continues to be viable

School Year	English Program	French Immersion Program
September 2013	English Grades 2 - 8	FI Grades 1 - 8
September 2014	English Grades 3 - 8	FI Grades 1 - 8
September 2015	English Grades 4 - 8	FI Grades 1 - 8
September 2016	English Grades 5 - 8	FI Grades 1 - 8
September 2017	English Grades 6 - 8	FI Grades 1 - 8
September 2018	English Grades 7 - 8	FI Grades 1 - 8
September 2019	English Grade 8	FI Grades 1 - 8
September 2020	No English program	FI Grades 1 - 8

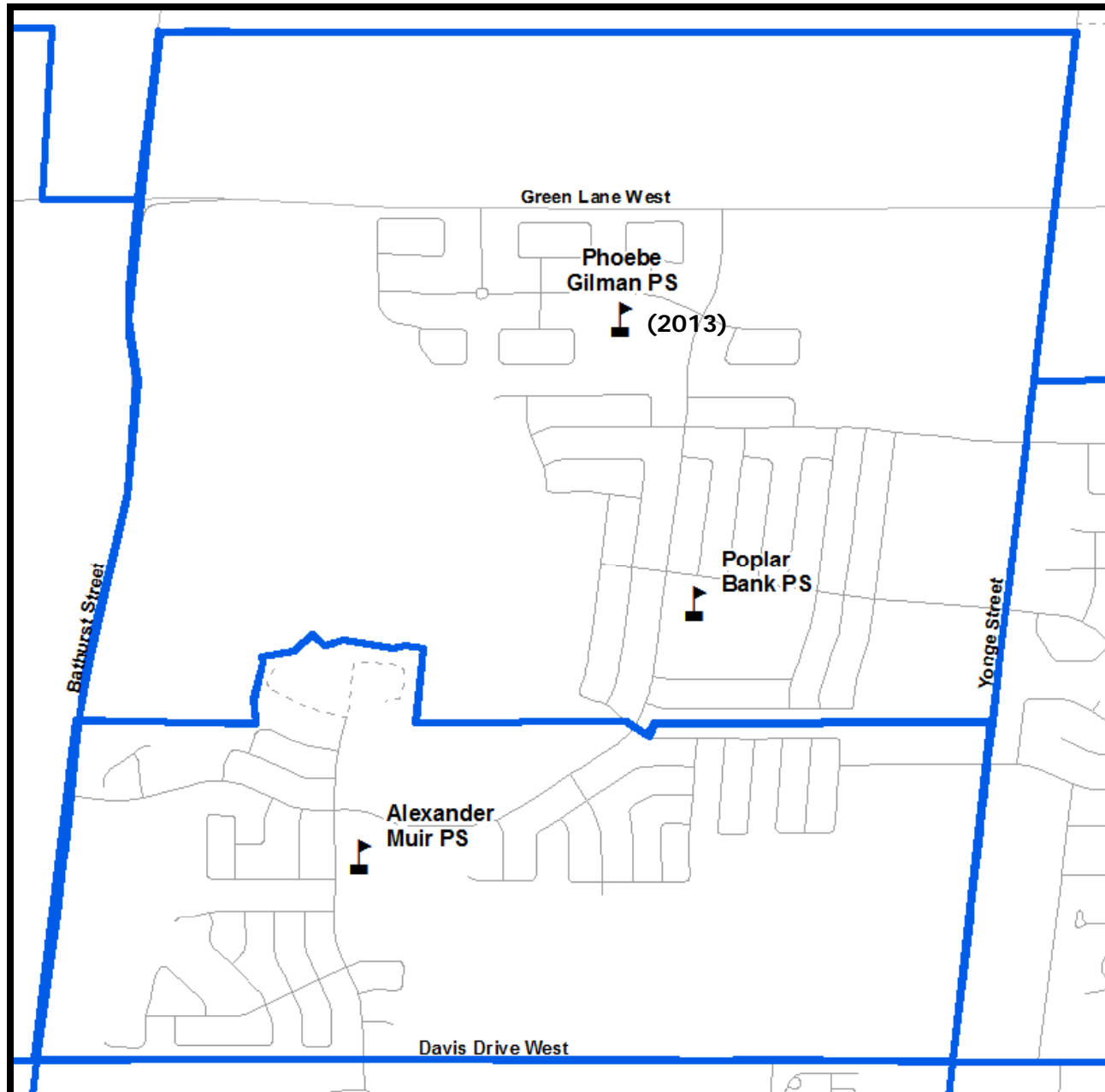
Options for Transition (Option 2 Cont'd)

- Current Grade 1 to 7 students who wish to attend Phoebe Gilman PS in 2013-14 may do so
- In following years, English program students who wish to move to Phoebe Gilman PS may apply through the transfer process
- No new English program registrations at Poplar Bank PS beginning in 2013-14

Current Poplar Bank PS/Alexander Muir PS



Proposed Poplar Bank PS/Alexander Muir PS/Phoebe Gilman PS



2013 Projected Enrolment

- **With grandfathering**

	2013	Capacity	Utilization
Alexander Muir PS	512	527	97%
Phoebe Gilman PS	372	671	55%
Poplar Bank PS	643	568	113%

- **All regular track moves**

	2013	Capacity	Utilization
Alexander Muir PS	512	527	97%
Phoebe Gilman PS	613	671	91%
Poplar Bank PS	402	568	71%

5 Year Projected Enrolment

- 5 Year Projected Enrolment of each school (with Regular track grandfathering out of Poplar Bank PS)

	Alexander Muir PS	Phoebe Gilman PS	Poplar Bank PS
2013	512	372	643
2014	543	448	632
2015	578	524	605
2016	607	597	591
2017	634	650	579

- Pace of new development and student choice to other programs could alter these projections

Boundary Review Timelines

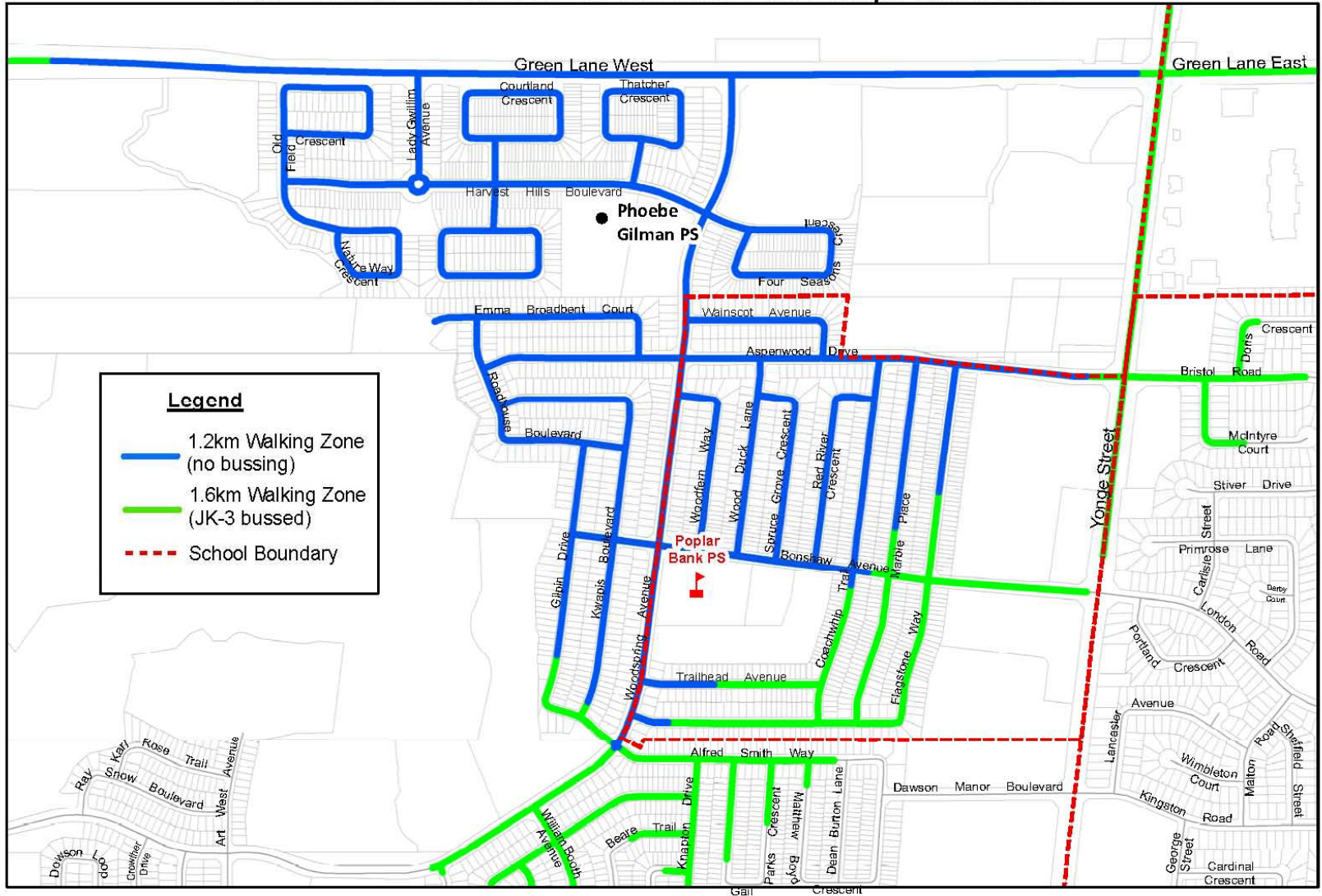
School Councils	November 5-7, 2012
Public Meeting	November 27, 2012
Program Planning Committee	February 5, 2013
Coordinating Council of Superintendents	February 13, 2013
Board Standing	February 19, 2013
Board	March 5, 2013
Implementation	September 2013

Questions?



Supplemental Information

DRAFT Phoebe Gilman PS 1.2km and 1.6km Non-Transportation Zones



Walking areas are based on a street network distance that does not include all factors that determine walking areas such as student safety and pedestrian walkways. The street network distance may not be 100% accurate.

Produced by Planning & Property Development Services
 Copyright © York Region District School Board, Oct 2012
 Copyright © Road and Rail Network from Regional Municipality of York, 2012

Approximately 10% of enrolment could be eligible for transportation (JK-3 in SE corner)